

**SACC - COPPER "C" GROUNDING COMPRESSION CONNECTORS**

SACC-70-70

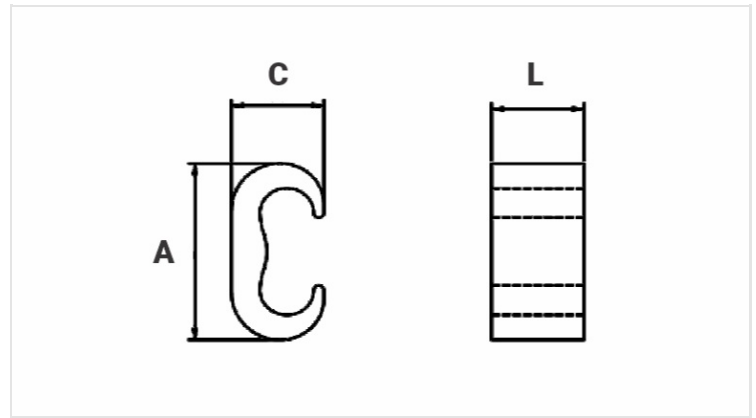
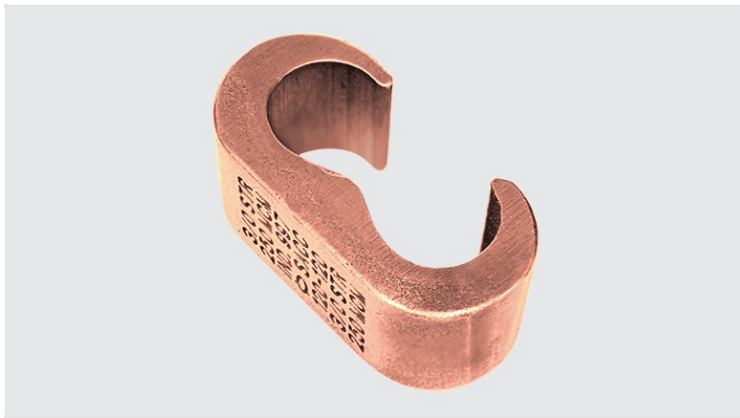
**Description**

**Purpose:** Cable to cable splice or tap connector. Suitable for COPPERSTEEL (Copper Clad Steel) and copper cables.

**Characteristics:** Compression connection. High resistance to corrosion. It can be buried directly into the ground or concrete.

**Application:** Grounding systems in general (power distribution systems, grounding grids, residential, building and industrial grounding), grounding in telecommunication networks, grounding in substations).

**Material:** Copper alloy, supplied with anti-oxidant compound INTELTROX-Cu.



**Datasheet**

**Conductor**

Run

AWG/MCM

2 - 2/0

mm<sup>2</sup>

35 - 70

Tap

AWG/MCM

6 - 2/0

mm<sup>2</sup>

16 - 70

**Die Index**

IU-O

**Application Tool**

AY-96/CY-96/AHM-400/AHB-400

**Compressions**

1

**Dimensions (mm)**

L

19,0

A

39,0

C

19,0

**Package**

Qty. / Package

40

Unit Weight (g)

56,80