

SACC - COPPER "C" GROUNDING COMPRESSION CONNECTORS

SACC-120-120

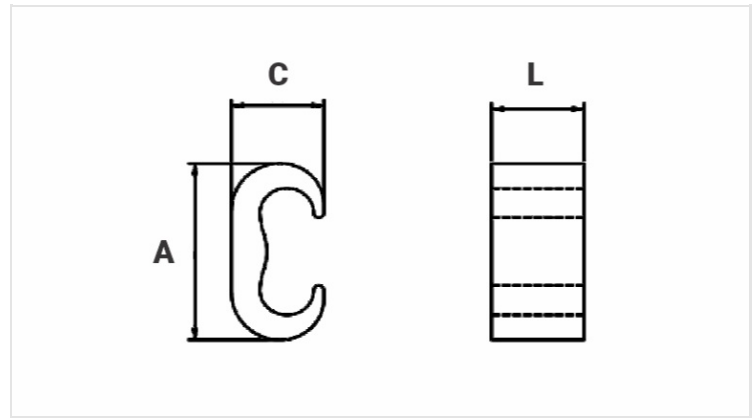
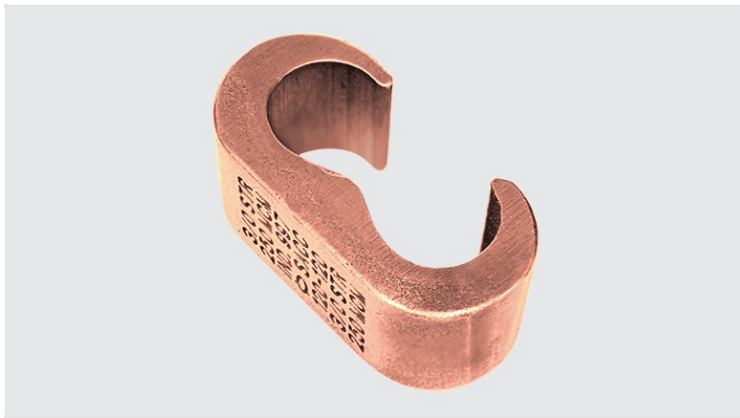
Description

Purpose: Cable to cable splice or tap connector. Suitable for COPPERSTEEL (Copper Clad Steel) and copper cables.

Characteristics: Compression connection. High resistance to corrosion. It can be buried directly into the ground or concrete.

Application: Grounding systems in general (power distribution systems, grounding grids, residential, building and industrial grounding), grounding in telecommunication networks, grounding in substations).

Material: Copper alloy, supplied with anti-oxidant compound INTELTROX-Cu.



Datasheet

Conductor

Run

AWG/MCM

3/0 - 250

mm²

95 - 120

Tap

AWG/MCM

3/0 - 250

mm²

95 - 120

Die Index

IU-997

Application Tool

AY-96/CY-96/AHM-400/AHB-400

Compressions

1

Dimensions (mm)

L

22,0

A

49,0

C

24,0

Package

Qty. / Package

25

Unit Weight (g)

92,00