

TM - COPPER COMPRESSION TERMINAL (ONE HOLE / SHORT BARREL)

TM-16-8

Description

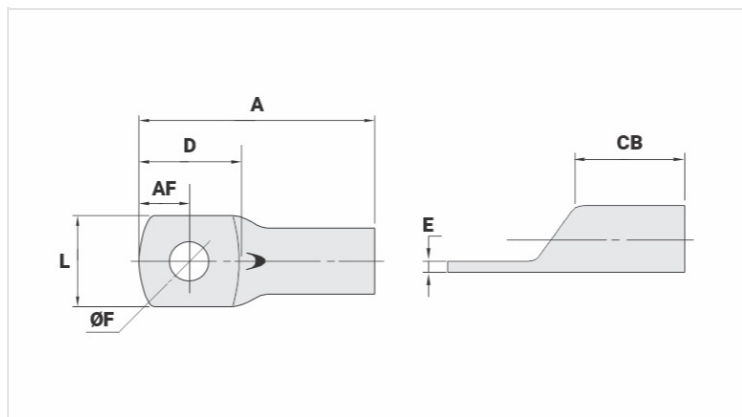
Purpose: Termination of copper conductors.

Characteristics: High electrical conductivity and corrosion resistance. Pad with several hole diameter options and optimum electrical contact.

Applications: Electrical panels, circuit breaker connections, motors, machines, busbars, electrical distribution boards, among others.

Material: Electrolytic copper.

Finish: Tin plated.



Datasheet

Conductors - Cross Section (mm²) 16

Dimensions (mm)

| | |
|-----------------------|------|
| Diâmetro do Furo (mm) | 8,5 |
| Parafuso* | |
| Pol. | 3/16 |
| Métrico | M5 |
| L | 11,3 |
| A | 28,0 |
| CB | 10,0 |
| AF | 6,0 |
| D | 13,5 |
| E | 2,0 |

Current (A) 137

Application Tool

| | |
|------------------------------------|----------|
| Alicate Mecânico | |
| Modelo | AT-60/68 |
| Matriz (AT-60) | IW-5 |
| Alicate Hidráulico (AY-96 / CY-96) | |
| Matriz Circunf. | IU-5 |
| Matriz Hexagonal | H-5 |

Package

Qtd / Emb

100

Peso Unit. (g)

4,37