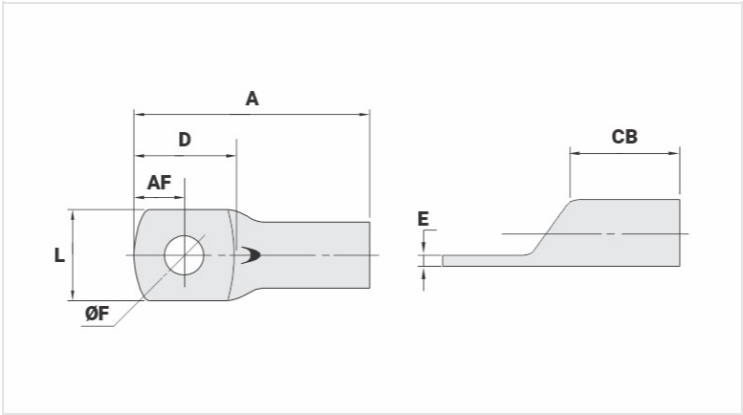


TM - COPPER COMPRESSION TERMINAL (ONE HOLE / SHORT BARREL)

TM-25-8

Description

- Purpose:** Termination of copper conductors.
- Characteristics:** High electrical conductivity and corrosion resistance. Pad with several hole diameter options and optimum electrical contact.
- Applications:** Electrical panels, circuit breaker connections, motors, machines, busbars, electrical distribution boards, among others.
- Material:** Electrolytic copper.
- Finish:** Tin plated.



Datasheet

Conductors - Cross Section (mm ²)	25
Dimensions (mm)	
Hole Diameter (mm)	8,5
Screw*	
Inches	5/16
Metric	M8
L	12,9
A	32,0
CB	11,0
AF	6,0
D	15,5
E	2,0
Current (A)	182
Application Tool	
Mechanical Pliers	
Model	AT-60/68
Die (AT-60)	IW-4
Hydraulic Pliers (AY/CY/AHM/AHB)	
Circunferencial Die	IU-4
Hexagonal Die	H-4

Package	
Qty. / Package	100
Unit Weight (g)	6,75