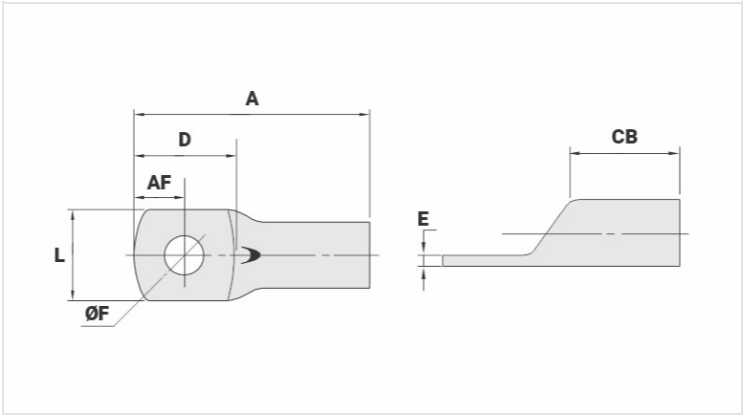


TM - COPPER COMPRESSION TERMINAL (ONE HOLE / SHORT BARREL)

TM-35-6

Description

- Purpose:** Termination of copper conductors.
- Characteristics:** High electrical conductivity and corrosion resistance. Pad with several hole diameter options and optimum electrical contact.
- Applications:** Electrical panels, circuit breaker connections, motors, machines, busbars, electrical distribution boards, among others.
- Material:** Electrolytic copper.
- Finish:** Tin plated.



Datasheet

Conductors - Cross Section (mm²)	35
Dimensions (mm)	
Hole Diameter (mm)	6,5
Screw*	
Inches	1/4
Metric	M6
L	15,0
A	36,0
CB	12,0
AF	8,0
D	17,5
E	2,4
Current (A)	226
Application Tool	
Mechanical Pliers	
Model	AT-60/68
Die (AT-60)	IW-4
Hydraulic Pliers (AY/CY/AHM/AHB)	
Circunferencial Die	IU-4
Hexagonal Die	H-4

Package	
Qty. / Package	100
Unit Weight (g)	10,00