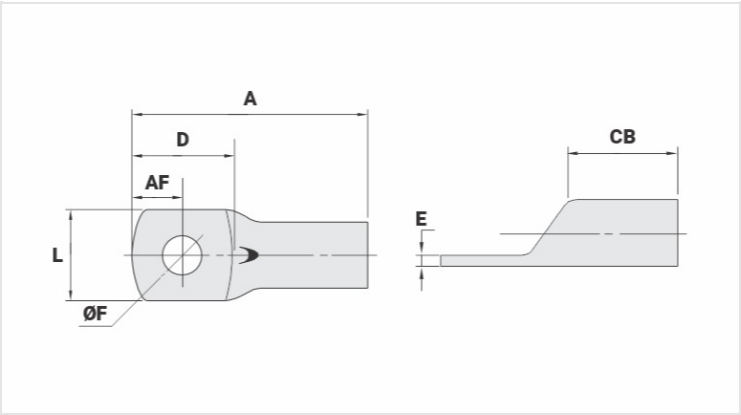


TM - COPPER COMPRESSION TERMINAL (ONE HOLE / SHORT BARREL)

TM-35

Description

- Purpose:** Termination of copper conductors.
- Characteristics:** High electrical conductivity and corrosion resistance. Pad with several hole diameter options and optimum electrical contact.
- Applications:** Electrical panels, circuit breaker connections, motors, machines, busbars, electrical distribution boards, among others.
- Material:** Electrolytic copper.
- Finish:** Tin plated.



Datasheet

| | |
|---|----------|
| Conductors - Cross Section (mm ²) | 35 |
| Dimensions (mm) | |
| Hole Diameter (mm) | 8,5 |
| Screw* | |
| Inches | 5/16 |
| Metric | M8 |
| L | 15,0 |
| A | 36,0 |
| CB | 12,0 |
| AF | 8,0 |
| D | 17,5 |
| E | 2,4 |
| Current (A) | 226 |
| Application Tool | |
| Mechanical Pliers | |
| Model | AT-60/68 |
| Die (AT-60) | IW-4 |
| Hydraulic Pliers (AY/CY/AHM/AHB) | |
| Circunferencial Die | IU-4 |
| Hexagonal Die | H-4 |

| Package | |
|-----------------|------|
| Qty. / Package | 100 |
| Unit Weight (g) | 9,50 |