

TM - COPPER COMPRESSION TERMINAL (ONE HOLE / SHORT BARREL)

TM-120-13

Description

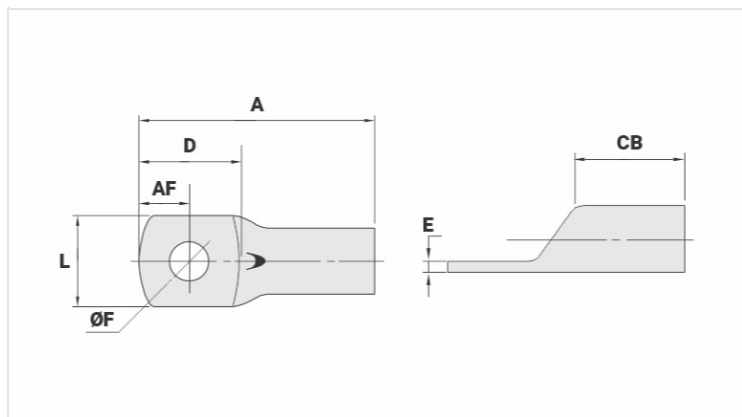
Purpose: Termination of copper conductors.

Characteristics: High electrical conductivity and corrosion resistance. Pad with several hole diameter options and optimum electrical contact.

Applications: Electrical panels, circuit breaker connections, motors, machines, busbars, electrical distribution boards, among others.

Material: Electrolytic copper.

Finish: Tin plated.



Datasheet

Conductors - Cross Section (mm²) 120

Dimensions (mm)

Diâmetro do Furo (mm)	13,8
Parafuso*	
Pol.	3/8
Métrico	M10
L	27,0
A	65,0
CB	25,5
AF	13,3
D	29,5
E	3,3

Current (A) 500

Application Tool

Alicate Mecânico	
Modelo	AT-60/68
Matriz (AT-60)	IW-29
Alicate Hidráulico (AY-96 / CY-96)	
Matriz Circunf.	IU-29
Matriz Hexagonal	H-29

Package

Qtd / Emb

30

Peso Unit. (g)

44,65