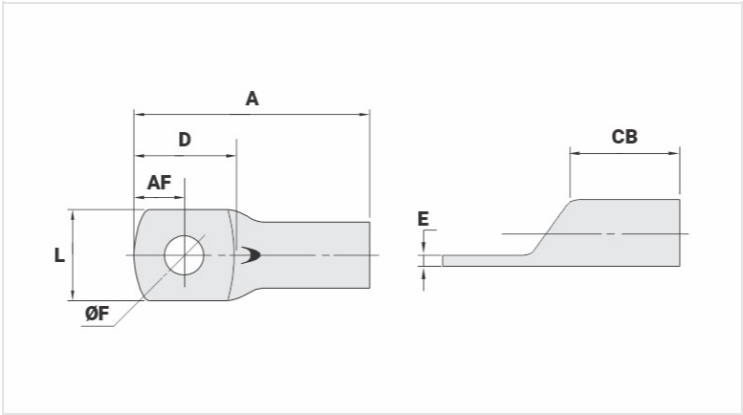


TM - COPPER COMPRESSION TERMINAL (ONE HOLE / SHORT BARREL)

TM-240-10

Description

- Purpose:** Termination of copper conductors.
- Characteristics:** High electrical conductivity and corrosion resistance. Pad with several hole diameter options and optimum electrical contact.
- Applications:** Electrical panels, circuit breaker connections, motors, machines, busbars, electrical distribution boards, among others.
- Material:** Electrolytic copper.
- Finish:** Tin plated.



Datasheet

| | |
|---|---------|
| Conductors - Cross Section (mm ²) | 240 |
| Dimensions (mm) | |
| Hole Diameter (mm) | 10,5 |
| Screw* | |
| Inches | 3/8 |
| Metric | M10 |
| L | 38,0 |
| A | 80,5 |
| CB | 29,0 |
| AF | 17,0 |
| D | 35,0 |
| E | 4,8 |
| Current (A) | 781 |
| Application Tool | |
| Mechanical Pliers | |
| Model | - |
| Die (AT-60) | - |
| Hydraulic Pliers (AY/CY/AHM/AHB) | |
| Circunferencial Die | IU-34** |
| Hexagonal Die | H-34 |

| Package | |
|-----------------|--------|
| Qty. / Package | 20 |
| Unit Weight (g) | 118,70 |