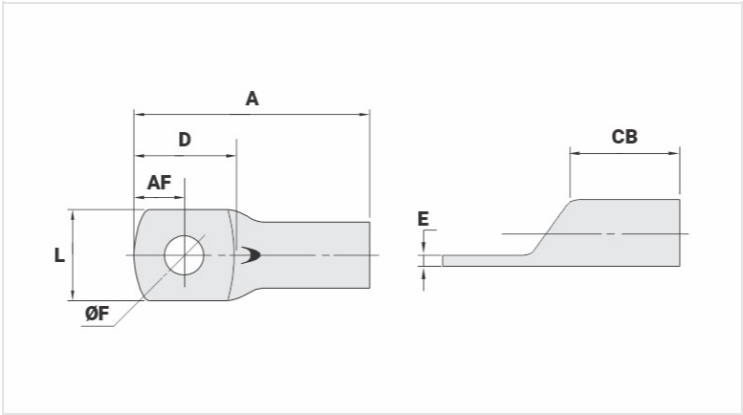


TM - COPPER COMPRESSION TERMINAL (ONE HOLE / SHORT BARREL)

TM-240-17

Description

- Purpose:** Termination of copper conductors.
- Characteristics:** High electrical conductivity and corrosion resistance. Pad with several hole diameter options and optimum electrical contact.
- Applications:** Electrical panels, circuit breaker connections, motors, machines, busbars, electrical distribution boards, among others.
- Material:** Electrolytic copper.
- Finish:** Tin plated.



Datasheet

Conductors - Cross Section (mm <sup>2</sup> )	240
Dimensions (mm)	
Hole Diameter (mm)	17,5
Screw*	
Inches	5/8
Metric	M16
L	38,0
A	80,5
CB	29,0
AF	17,0
D	35,0
E	4,8
Current (A)	781
Application Tool	
Mechanical Pliers	
Model	-
Die (AT-60)	-
Hydraulic Pliers (AY/CY/AHM/AHB)	
Circunferencial Die	IU-34**
Hexagonal Die	H-34

Package	
Qty. / Package	20
Unit Weight (g)	112,10