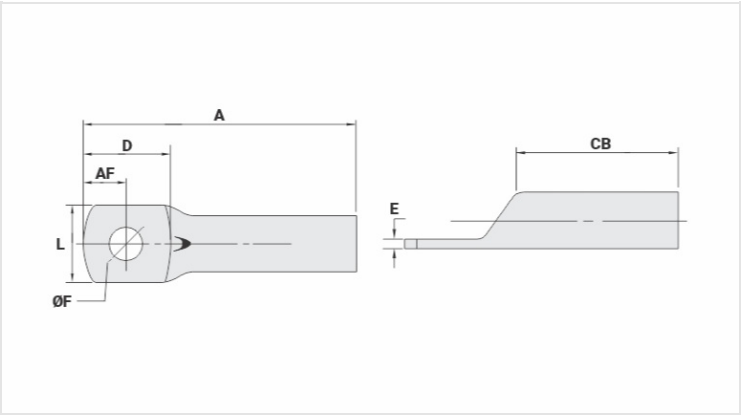


TM-L - COPPER COMPRESSION TERMINAL (ONE HOLE / LONG BARREL)

TM--300-L

Description

- Purpose:** Termination of copper conductors.
- Characteristics:** High electrical conductivity and corrosion resistance. Pad with several hole diameter options and optimum electrical contact.
- Applications:** Electrical panels, circuit breaker connections, motors, machines, busbars, electrical distribution boards, among others.
- Material:** Electrolytic copper.
- Finish:** Tin plated.



Datasheet

Conductors - Cross Section (mm <sup>2</sup> )	300
Dimensions (mm)	
Hole Diameter (mm)	13,8
Screw*	
Inches	1/2
Metric	M12
L	41,5
A	104,0
CB	48,0
AF	19,0
D	40,0
E	5,0
Current (A)	902
Application Tool	
Mechanical Pliers	
Model	-
Die (AT-60)	-
Hydraulic Pliers (AY/CY/AHM/AHB)	
Circunferencial Die	IU-36
Hexagonal Die	H-36

Package	
Qty. / Package	10
Unit Weight (g)	170,00