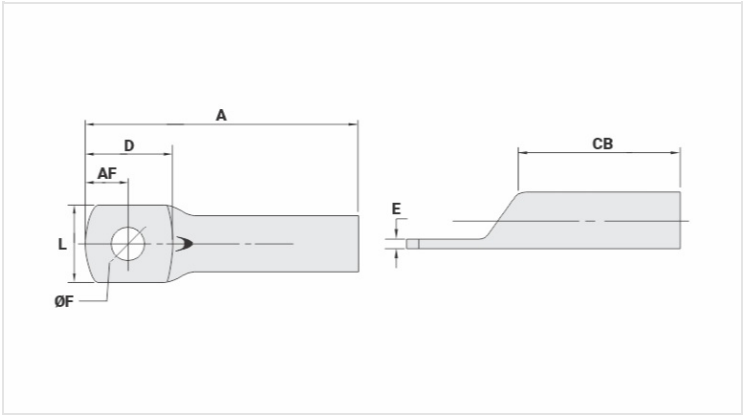


TM-L - COPPER COMPRESSION TERMINAL (ONE HOLE / LONG BARREL)

TM-400-L-17

Description

- Purpose:** Termination of copper conductors.
- Characteristics:** High electrical conductivity and corrosion resistance. Pad with several hole diameter options and optimum electrical contact.
- Applications:** Electrical panels, circuit breaker connections, motors, machines, busbars, electrical distribution boards, among others.
- Material:** Electrolytic copper.
- Finish:** Tin plated.



Datasheet

Conductors - Cross Section (mm²)		400
Dimensions (mm)		
Hole Diameter (mm)		17,5
Screw*		
Inches		5/8
Metric		M16
L		46,5
A		125,0
CB		62,0
AF		19,0
D		44,0
E		5,3
Current (A)		1085
Application Tool		
Mechanical Pliers		
Model		-
Die (AT-60)		-
Hydraulic Pliers (AY/CY/AHM/AHB)		
Circunferencial Die		IU-40
Hexagonal Die		H-40

Package	
Qty. / Package	8
Unit Weight (g)	259,40