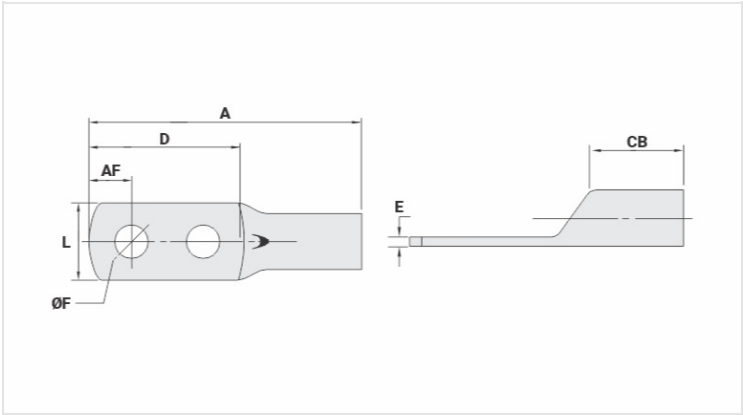


TM-2 - COPPER COMPRESSION TERMINAL (TWO HOLES / SHORT BARREL)

TM-10-2

Description

- Purpose:** Termination of copper conductors.
- Characteristics:** High electrical conductivity and corrosion resistance. Pad with several hole diameter options and optimum electrical contact.
- Applications:** Electrical panels, circuit breaker connections, motors, machines, busbars, electrical distribution boards, among others.
- Material:** Electrolytic copper.
- Finish:** Tin plated.



Datasheet

Conductors - Cross Section (mm²)	10
Dimensions (mm)	
Hole Diameter (mm)	5,2
Screw*	
Inches	3/16
Metric	M5
L	8,6
A	37,0
CB	8,0
AF	5,0
D	25,0
E	1,5
Current (A)	101
Application Tool	
Mechanical Pliers	
Model	AT-60/68
Die (AT-60)	IW-8
Hydraulic Pliers (AY/CY/AHM/AHB)	
Circunferencial Die	IU-8
Hexagonal Die	H-8

Package	
Qty. / Package	50
Unit Weight (g)	3,40