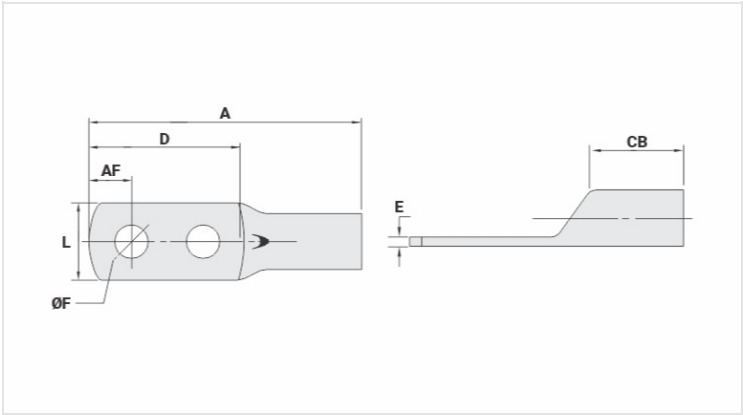


TM-2 - COPPER COMPRESSION TERMINAL (TWO HOLES / SHORT BARREL)

TM-50-2

Description

- Purpose:** Termination of copper conductors.
- Characteristics:** High electrical conductivity and corrosion resistance. Pad with several hole diameter options and optimum electrical contact.
- Applications:** Electrical panels, circuit breaker connections, motors, machines, busbars, electrical distribution boards, among others.
- Material:** Electrolytic copper.
- Finish:** Tin plated.



Datasheet

Conductors - Cross Section (mm²)	50
Dimensions (mm)	
Hole Diameter (mm)	8,5
Screw*	
Inches	5/16
Metric	M8
L	18,0
A	64,5
CB	16,0
AF	9,0
D	42,0
E	2,7
Current (A)	275
Application Tool	
Mechanical Pliers	
Model	AT-60/68
Die (AT-60)	IW-1
Hydraulic Pliers (AY/CY/AHM/AHB)	
Circunferencial Die	IU-2
Hexagonal Die	H-2

Package	
Qty. / Package	50
Unit Weight (g)	24,00