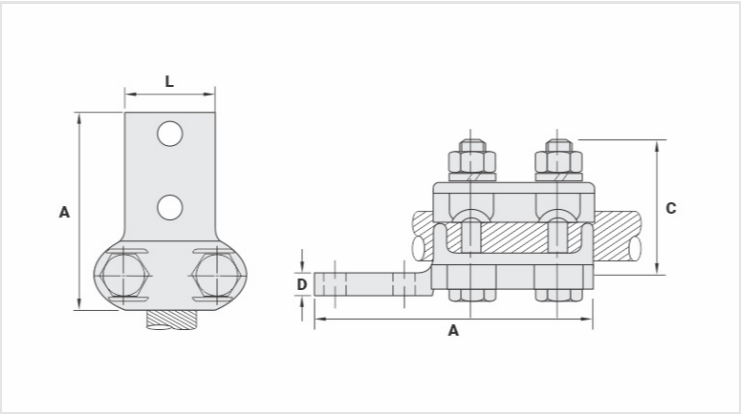


TTAC - ALUMINUM CABLE-BUSBAR TERMINAL (STRAIGHT CONNECTION)

TTAC-600-900-2N

Description

- Purpose:** Cable to busbar termination for CA or CAA aluminum cables.
- Characteristics:** Mechanical connection. High electrical conductivity. Pad with two or four NEMA standard holes. There are lugs that lock the head of the screws.
- Application:** Power distribution lines and substations.
- Material:** Cast aluminum alloy and hot galvanized steel fittings.
- Application Tool:** Star or open-ended wrench.
- Note:** Using of the antioxidant compound INTELTROX is recommended.



Datasheet

Conductors

AAC (AWG/MCM)	600 - 900
ACSR/AW (AWG)	477 - 795

Screw	M12
-------	-----

Dimensions (mm)

L	52,0
A	174,0
C	70,0
D	12,0
Qty. of Holes	2

Package

Qty. / Package	12
Unit Weight (g)	920,00