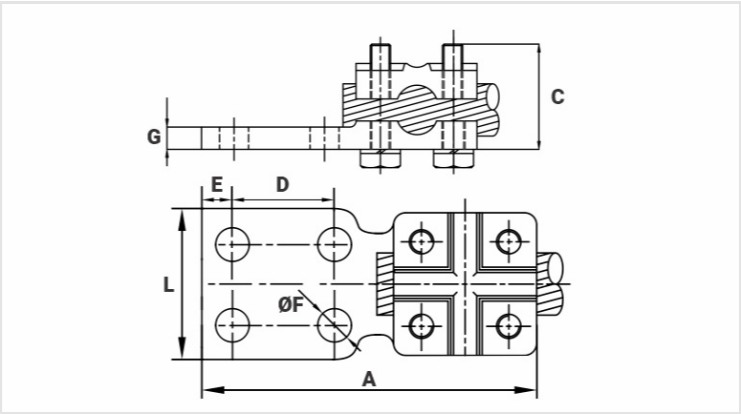


CTRA - ALUMINUM CABLE-BUSBAR TERMINAL (STRAIGHT OR 90º CONNECTION)

CTRA-6-636-4N

Description

- Purpose:** Cable to busbar termination for CA or CAA aluminum cables.
- Characteristics:** Mechanical connection. High electrical conductivity. Pad with two or four holes NEMA standard. With a single item meets a wide range of cables. Straight or 90º in relation to the bus.
- Application:** Power distribution lines and substation.
- Material:** Cast aluminum alloy and stainless steel fittings.
- Application Tool:** Star or open-ended wrench.
- Note:** The use of the antioxidant compound INTELTROX is recommended.



Datasheet

Conductors

mm²	16 - 300
AWG/MCM	6 - 636

Dimensions (mm)

L	137,0
A	45,0
C	76,0
D	44,5
E	16,0
ØF	14,0
G	11,0
Screw	M10
Qty. of Holes	4

Package

Qty. / Package	5
Unit Weight (g)	433,10