

CTRB - COPPER CABLE-BUSBAR TERMINAL (STRAIGHT OR 90º CONNECTION)

CTRB-6-636-2N

Description

**Purpose:** Cable to busbar termination for copper or CA or CAA aluminum cables.

**Characteristics:** Tightening connection. High electrical conductivity. Pad with two or four holes NEMA standard. Meets a wide range of cables. Straight or 90º in relation to the bus.

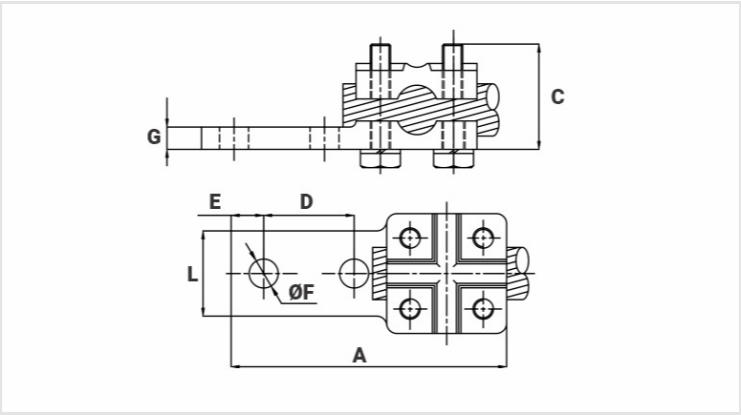
**Application:** Power distribution lines and substations.

**Material:** Bronze terminal, fittings in Copper alloy or hot-dip galvanization.

**Application Tool:** Star or open-ended wrench.

**Finish:** Tinned.

**Note:** For aluminum conductors, the use of the antioxiide compound INTELTROX is recommended.



Datasheet

Conductors

mm²	16 - 300
AWG/MCM	6 - 636

Dimensions (mm)

L	137,0
A	45,0
C	42,0
D	44,5
E	16,0
ØF	14,0
G	11,0
Screw	M10
Qty. of Holes	2

Package

Qty. / Package	6
Unit Weight (g)	953,00