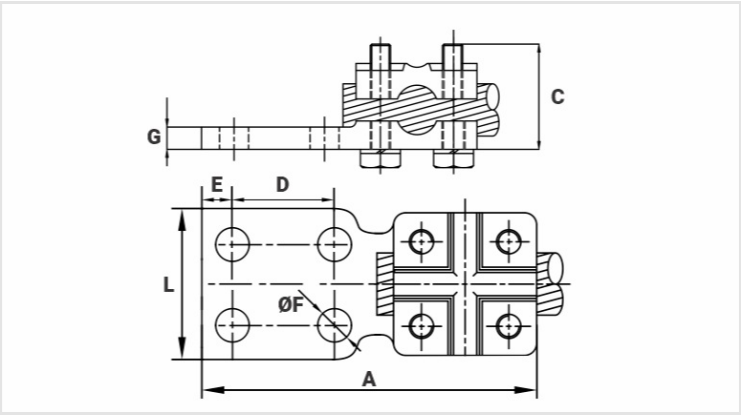


CTRB - COPPER CABLE-BUSBAR TERMINAL (STRAIGHT OR 90º CONNECTION)

CTRB-6-636-4N

Description

- Purpose:** Cable to busbar termination for copper or CA or CAA aluminum cables.
- Characteristics:** Tightening connection. High electrical conductivity. Pad with two or four holes NEMA standard. Meets a wide range of cables. Straight or 90º in relation to the bus.
- Application:** Power distribution lines and substations.
- Material:** Bronze terminal, fittings in Copper alloy or hot-dip galvanization.
- Application Tool:** Star or open-ended wrench.
- Finish:** Tinned.
- Note:** For aluminum conductors, the use of the antioxiide compound INTELTROX is recommended.



Datasheet

Conductors		
mm²		16 - 300
AWG/MCM		6 - 636
Dimensions (mm)		
L		137,0
A		45,0
C		76,0
D		44,5
E		16,0
ØF		14,0
G		11,0
Screw		M10
Qty. of Holes		4
Package		
Qty. / Package		5
Unit Weight (g)		1122,55