

TA - TIGHTENING TERMINAL (SYMMETRIC SERIES)

TA-500

Description

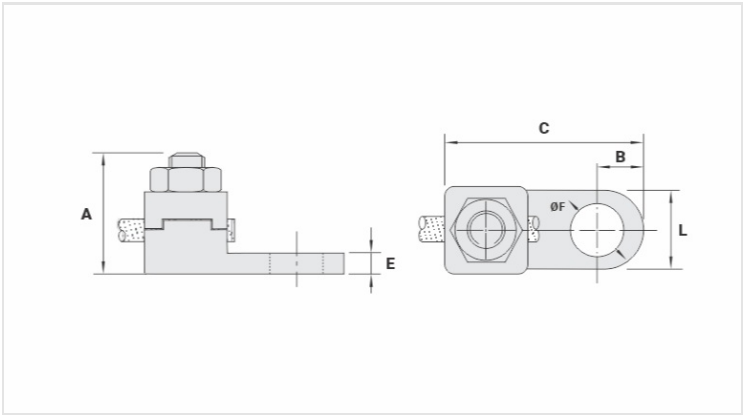
Purpose: Cable-busbar termination for copper cable (classes - 1/2/3). Connection to busbars, switchboards, electrical panels and others.

Characteristics: Mechanical pressure connection. Pad with one hole.

Application: Electrical installations in general (residential, building, industrial).

Material: Copper alloy terminal, electrolytic zinc plated steel nut.

Application Tool: Star or open-ended wrench.



Datasheet

Conductor		
mm²		500
AWG/MCM		1000
Screw		
Inches		5/8
Metric		M16
Dimensions (mm)		
L		39,0
A		61,0
C		94,0
B		19,5
E		9,0
ØF		18,0
Package		
Qty. / Package		8
Unit Weight (g)		541,30