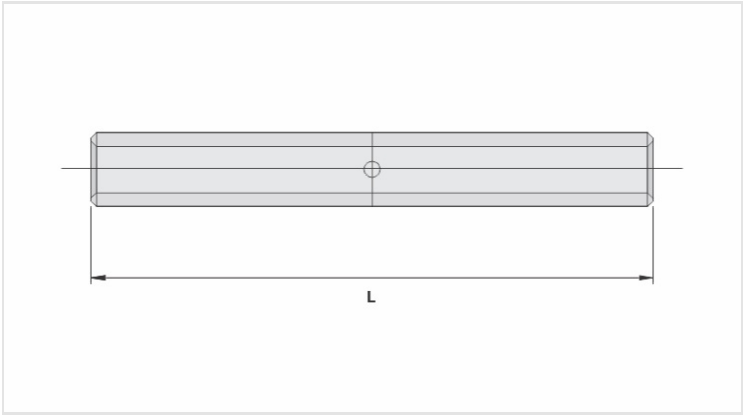


LAR - SPLICE SLEEVE FOR ALUMINUM CABLE (FULL TRACTION)

LAR-44

Description

- Purpose:** Aluminum cable splice (bare or insulated network), full traction.
- Characteristics:** Compression connection. High electrical conductivity and resistance to corrosion. Supplied with centering guide.
- Application:** Power distribution lines.
- Material:** Extruded aluminum. Supplied with antioxidant compoundINTELTROX.



Datasheet

Conductors		
AAC (AWG/MCM)		1/0
Compact (mm²)		50 - 70
Dimension (mm) - L		185,0
Application Tool		
Mechanical Pliers (AT-60 4t)		
Die		IW-243
Compressions		12
Hydraulic Pliers (AY/CY/AHM/AHB)		
Die		IU-243
Compressions		6
Package		
Qty. / Package		100
Unit Weight (g)		58,80