

LAR - SPLICE SLEEVE FOR ALUMINUM CABLE (FULL TRACTION)

LAR-92

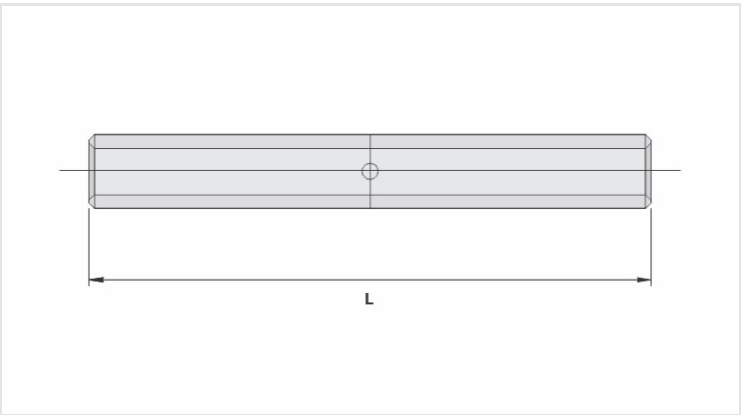
Description

Purpose: Aluminum cable splice (bare or insulated network), full traction.

Characteristics: Compression connection. High electrical conductivity and resistance to corrosion. Supplied with centering guide.

Application: Power distribution lines.

Material: Extruded aluminum. Supplied with antioxidant compoundINTELTROX.



Datasheet

Conductors		
AAC (AWG/MCM)		556,5
Compact (mm²)		300
Dimension (mm) - L		323,0
Application Tool		
Mechanical Pliers (AT-60 4t)		
Die		-
Compressions		-
Hydraulic Pliers (AY/CY/AHM/AHB)		
Die		IU-261
Compressions		18
Package		
Qty. / Package		25
Unit Weight (g)		494,00