

TPT - TUBULAR RING TYPE PRE-INSULATED TERMINALS

TPT-25-6

Description

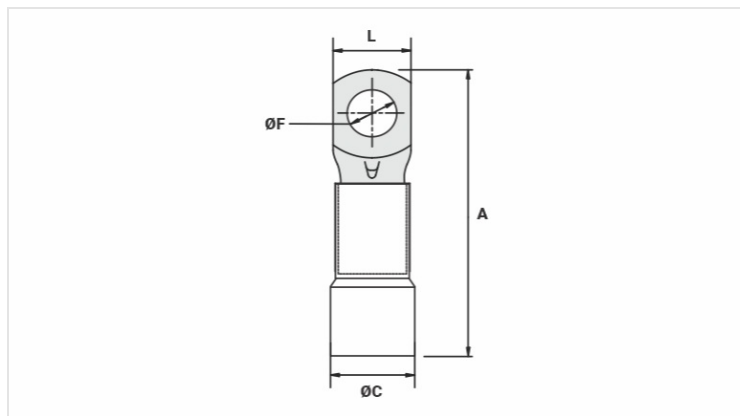
Purpose: Termination of rigid or flexible copper cables.

Characteristics: Compression connection. High electrical conductivity and corrosion resistance.

Application: Electrical installations in general (residential, building, industrial). Circuits up to 90°C and 750V.

Material: Electrolytic copper and polypropylene insulation.

Finish: Tin plated and insulated. Application Tool: ATP-49.



Datasheet

Insulation per DIN Standard (Color)	AMARELO
Conductors - Cross Section (mm²)	25
Dimensions (mm)	
L	12,9
A	42,5
C	9,0
ØF	6,5
Maximum Current (A)	146
Package	
Qty. / Package	100
Unit Weight (g)	8,35