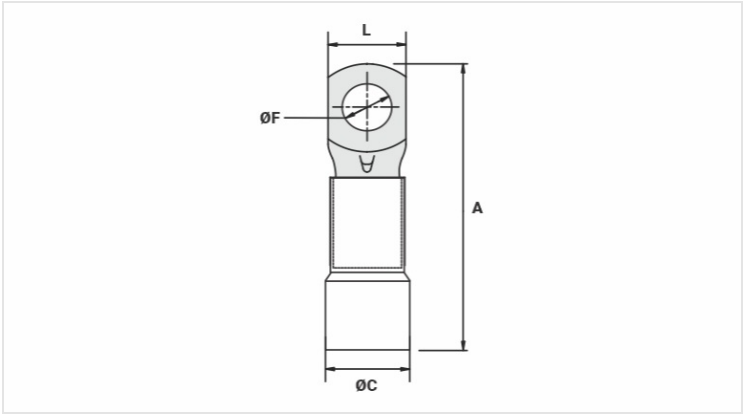


TPT - TUBULAR RING TYPE PRE-INSULATED TERMINALS

TPT-35-8

Description

- Purpose:** Termination of rigid or flexible copper cables.
- Characteristics:** Compression connection. High electrical conductivity and corrosion resistance.
- Application:** Electrical installations in general (residential, building, industrial). Circuits up to 90°C and 750V.
- Material:** Electrolytic copper and polypropylene insulation.
- Finish:** Tin plated and insulated. Application Tool: ATP-49.



Datasheet

| | |
|-------------------------------------|----------|
| Insulation per DIN Standard (Color) | VERMELHO |
| Conductors - Cross Section (mm²) | 35 |
| Dimensions (mm) | |
| L | 14,9 |
| A | 49,0 |
| C | 10,3 |
| ØF | 8,5 |
| Maximum Current (A) | 226 |
| Package | |
| Qtd / Emb | 100 |
| Peso Unit. (g) | 10,72 |