

TPP - TUBULAR PIN TYPE PRE-INSULATED TERMINALS

TPP-25-16

Description

Purpose: Termination of rigid or flexible copper cables.

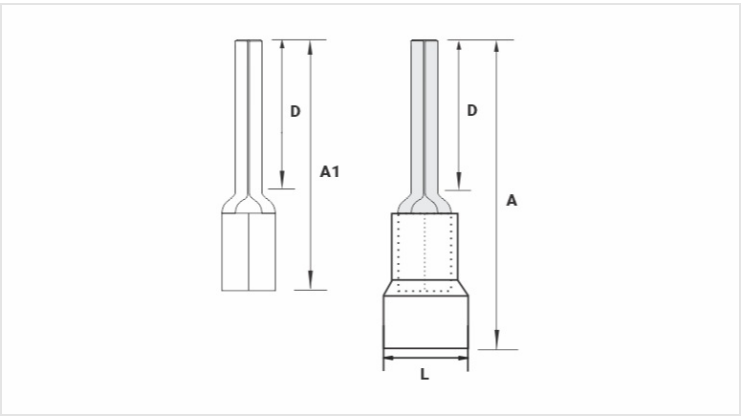
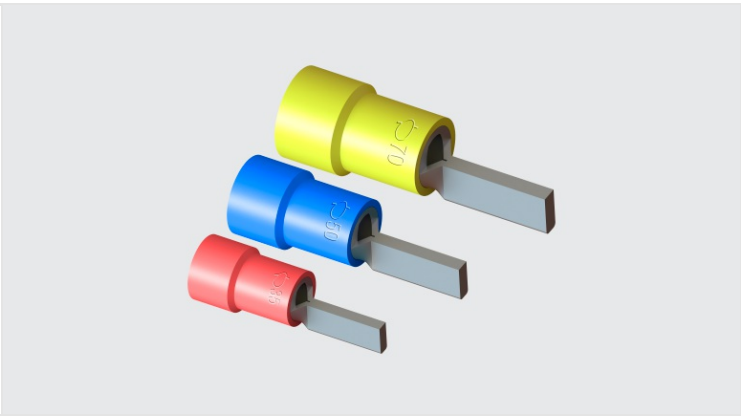
Characteristics: Compression connection. High electrical conductivity and corrosion resistance.

Application: Electrical installations in general (residential, building, industrial). Circuits up to 90°C and 750V.

Material: Electrolytic copper and polypropylene insulation.

Finish: Tin plated and insulated.

Application Tool: ATP-49.



Datasheet

Insulation per DIN Standard (Color)	AMARELO / YELLOW / AMARILLO
Conductors - Cross Section (mm ²)	25
Dimensions (mm)	
L	13,2
A	41,5
D	16,5
A1	30,0
Maximum Current (A)	146
Package	
Qty. / Package	100
Unit Weight (g)	6,40