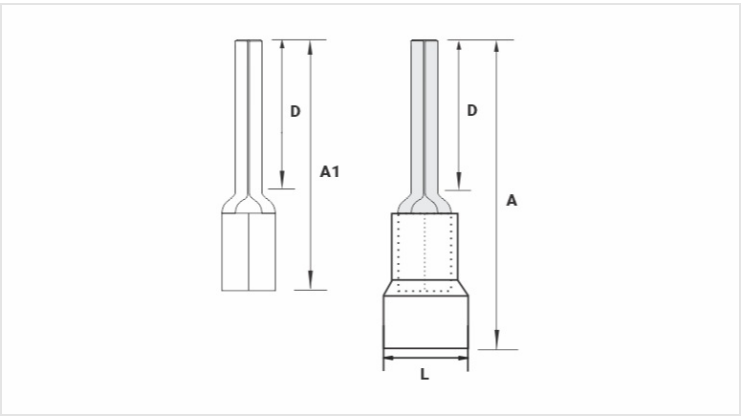
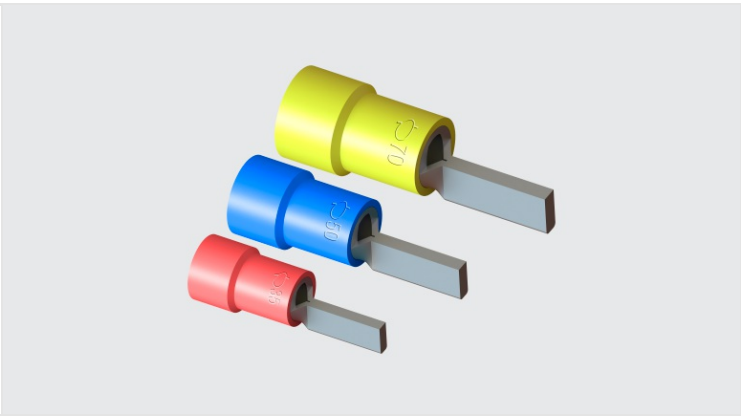


TPP - TUBULAR PIN TYPE PRE-INSULATED TERMINALS

TPP-35-17

Description

- Purpose:** Termination of rigid or flexible copper cables.
- Characteristics:** Compression connection. High electrical conductivity and corrosion resistance.
- Application:** Electrical installations in general (residential, building, industrial). Circuits up to 90°C and 750V.
- Material:** Electrolytic copper and polypropylene insulation.
- Finish:** Tin plated and insulated.
- Application Tool:** ATP-49.



Datasheet

Insulation per DIN Standard (Color)	VERMELHO / RED / ROJO
Conductors - Cross Section (mm <sup>2</sup> )	35
Dimensions (mm)	
L	15,0
A	46,0
D	17,0
A1	32,0
Maximum Current (A)	181
Package	
Qty. / Package	100
Unit Weight (g)	7,90