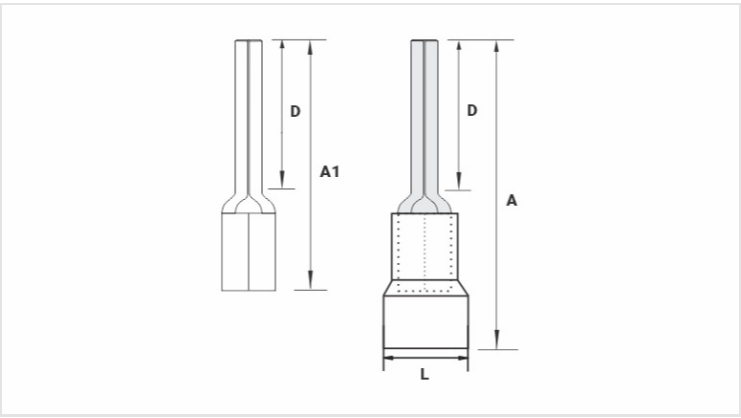
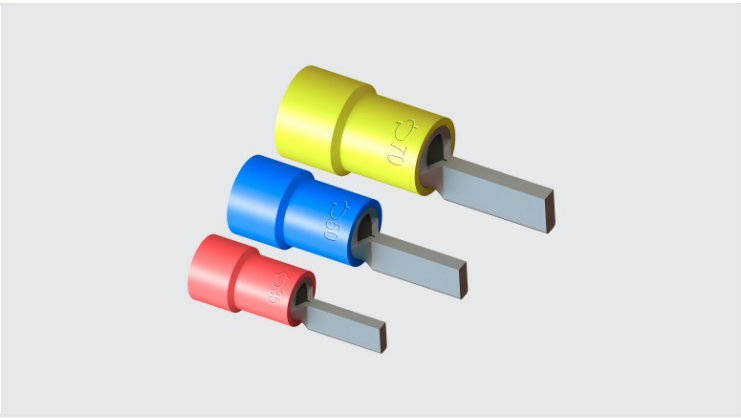


TPP - TUBULAR PIN TYPE PRE-INSULATED TERMINALS

TPP-50-24

Description

- Purpose:** Termination of rigid or flexible copper cables.
- Characteristics:** Compression connection. High electrical conductivity and corrosion resistance.
- Application:** Electrical installations in general (residential, building, industrial). Circuits up to 90°C and 750V.
- Material:** Electrolytic copper and polypropylene insulation.
- Finish:** Tin plated and insulated.
- Application Tool:** ATP-49.



Datasheet

Insulation per DIN Standard (Color)	AZUL
Conductors - Cross Section (mm ²)	50
Dimensions (mm)	
L	
A	55,0
C	
D	24,0
A1	41,5
Maximum Current (A)	275
Package	
Qtd / Emb	50
Peso Unit. (g)	13,60