

TPP - TUBULAR PIN TYPE PRE-INSULATED TERMINALS

TPP-70-24

Description

Purpose: Termination of rigid or flexible copper cables.

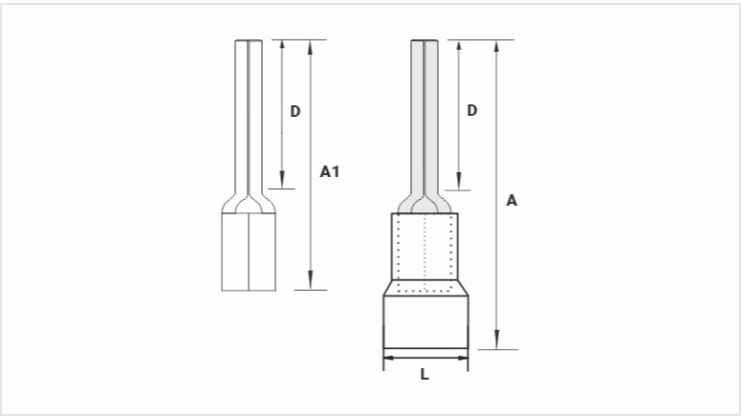
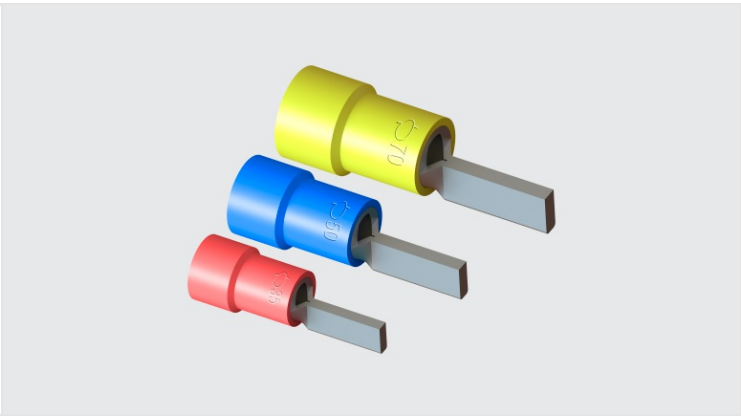
Characteristics: Compression connection. High electrical conductivity and corrosion resistance.

Application: Electrical installations in general (residential, building, industrial). Circuits up to 90°C and 750V.

Material: Electrolytic copper and polypropylene insulation.

Finish: Tin plated and insulated.

Application Tool: ATP-49.



Datasheet

Insulation per DIN Standard (Color)		AMARELO / YELLOW / AMARILLO
Conductors - Cross Section (mm²)		70
Dimensions (mm)		
L		18,4
A		62,0
D		24,0
A1		43,0
Maximum Current (A)		281
Package		
Qty. / Package		50
Unit Weight (g)		17,40