

MAT/FET - MALE/FEMALE QUICK DISCONNECT TYPE TERMINALS WITH TOTAL INSULATION

MAT-1,5-6

Description

**Purpose:** Connection / disconnection of rigid or flexible copper cables.

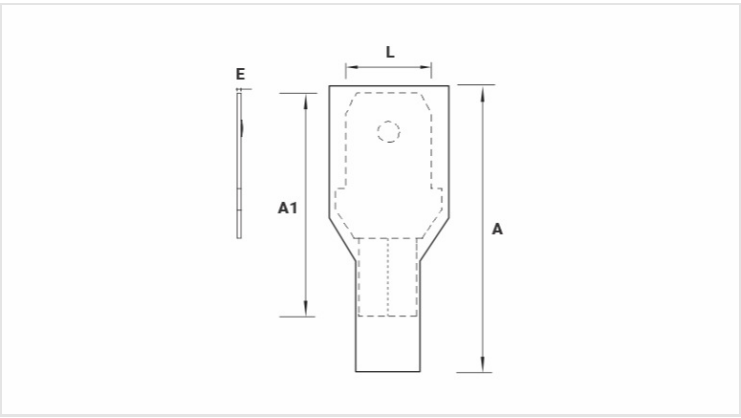
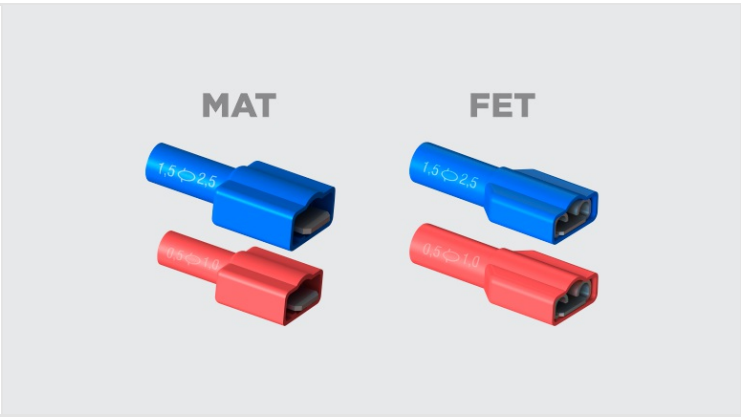
**Characteristics:** Compression connection. High electrical conductivity and corrosion resistance.

**Application:** Electrical installations in general (residential, building, industrial).Circuits up to 90°C and 750V.

**Material:** Electrolytic copper and polypropylene insulation.

**Finish:** Tin plated and insulated.

**Application Tool:** AT-10 or ATC-6.



Datasheet

Insulation per DIN Standard (Color)		VERMELHO / RED / ROJO
Conductor		
AWG/MCM		22 - 18
mm²		0,5 - 1,0
Dimensions (mm)		
L		6,4
A		25,0
Ø C		5,5
E		0,8
A1		19,0
Maximum Current (A)		10
Package		
Qty. / Package		100
Unit Weight (g)		1,45