

MAT/FET - MALE/FEMALE QUICK DISCONNECT TYPE TERMINALS WITH TOTAL INSULATION

MAT-2,5-6

Description

Purpose: Connection / disconnection of rigid or flexible copper cables.

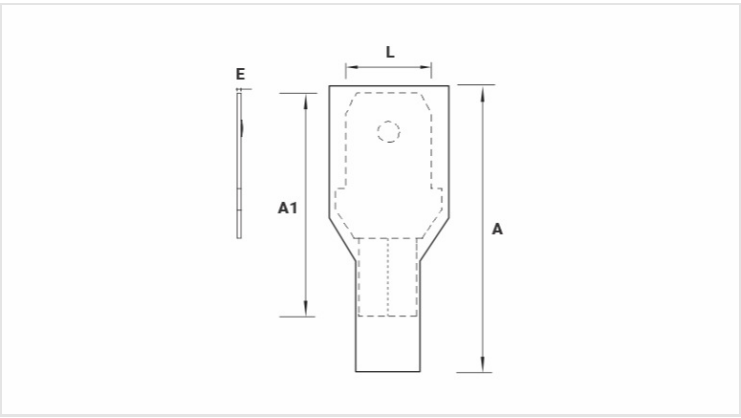
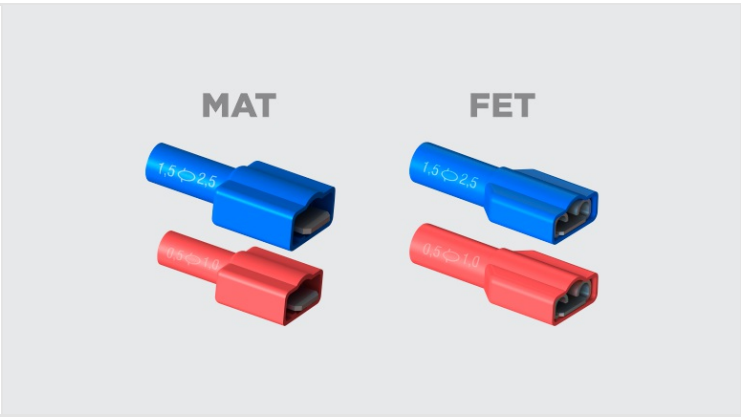
Characteristics: Compression connection. High electrical conductivity and corrosion resistance.

Application: Electrical installations in general (residential, building, industrial).Circuits up to 90°C and 750V.

Material: Electrolytic copper and polypropylene insulation.

Finish: Tin plated and insulated.

Application Tool: AT-10 or ATC-6.



Datasheet

Insulation per DIN Standard (Color)		AZUL / BLUE
Conductor		
AWG/MCM		16 - 14
mm²		1,5 - 2,5
Dimensions (mm)		
L		6,4
A		25,0
Ø C		5,5
E		0,8
A1		20,0
Maximum Current (A)		15
Package		
Qty. / Package		100
Unit Weight (g)		1,45