

LCBF - CAST ALUMINUM COMPRESSION CONNECTOR WITH STIRRUP

LCBF-38

Description

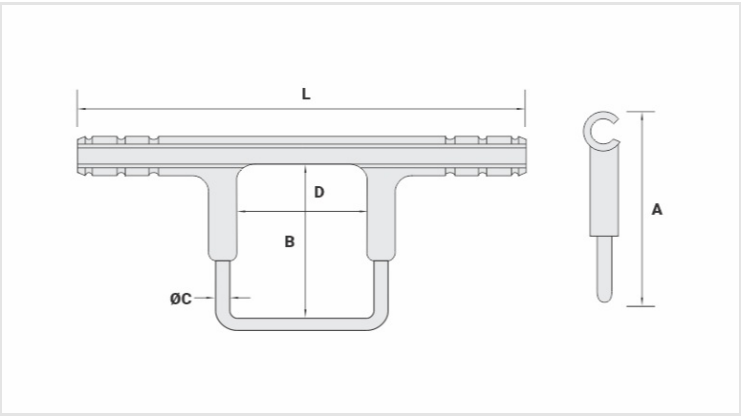
Purpose: Connection with CA, CAA aluminum cables. Enables ing of a hotline clamp oring of up to four wedge type or compression connectors.

Characteristics: Compression connection. High electrical conductivity and corrosion resistance.

Application: Power distribution lines.

Material: Cast aluminum body and stirrup in electrolytic copper. Supplied with antioxidant compound INTELTROX.

Finishing (Stirrup): Tin plated.



Datasheet

Conductors		
AAC/ACSR		4 - 2
Dimensions (mm)		
L		230,0
A		90,0
B		64,0
D		64,0
Ø E		6,3
Application Tool		
AT-61		
Die		IW-BG
Compressions		3
AY-96 / CY-96 / AHM-400 / AHB-400		
Die		IU-BG
Compressions		3
Package		
Qty. / Package		50
Unit Weight (g)		180,00