

AEB - CAST ALUMINUM CONNECTOR WITH STIRRUP

AEB-38-1

Description

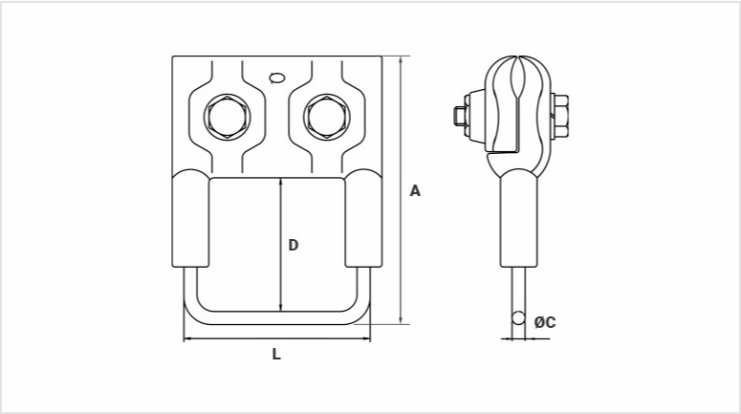
**Purpose:** Connection with CA, CAA aluminum cables. Enables ing of a hotline clamp.

**Characteristics:** Tightening connection. High electrical conductivity and corrosion resistance.

**Application:** Power distribution lines.

**Material:** Cast aluminum alloy body and stirrup in electrolytic copper.

**Application Tool:** Star or open ended wrench. Finishing (Stirrup): Tin plated.



Datasheet

Conductors

Run (AWG/MCM)	10 - 2
Type of Conductor	CA
Stirrup (AWG)	4

Dimensions (mm)

L	63,0
A	150,0
Ø C	5,2
D	100,0

Screw	1x M10
-------	--------

Package

Qty. / Package	20
Unit Weight (g)	220,00