

AEB - CAST ALUMINUM CONNECTOR WITH STIRRUP

AEB-88-2

Description

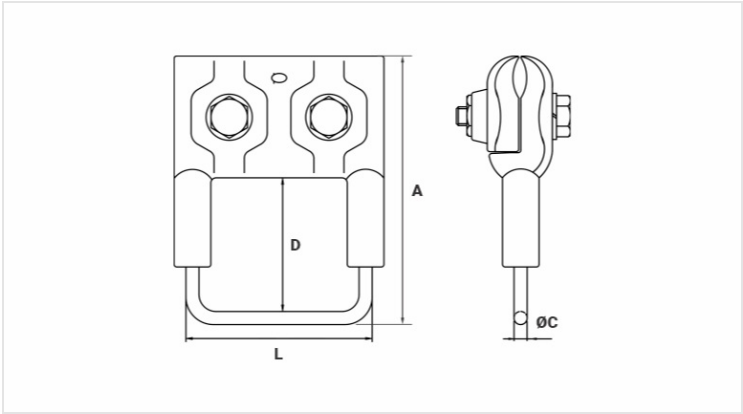
Purpose: Connection with CA, CAA aluminum cables. Enables ing of a hotline clamp.

Characteristics: Tightening connection. High electrical conductivity and corrosion resistance.

Application: Power distribution lines.

Material: Cast aluminum alloy body and stirrup in electrolytic copper.

Application Tool: Star or open ended wrench. Finishing (Stirrup): Tin plated.



Datasheet

Conductors

Run (AWG/MCM)	2/0 - 477
Type of Conductor	CA / CAA
Stirrup (AWG)	4/0

Dimensions (mm)

L	84,5
A	150,0
Ø C	11,0
D	65,0

Screw	2x M10
-------	--------

Package

Qty. / Package	8
Unit Weight (g)	698,00