

GTDB2C - BUSBAR DOUBLE GROUNDING CLAMPS (2 CONDUCTORS)

GTDB-2C-4-2/0

Description

**Purpose:** Cable to busbar connections. Suitable for COPPERSTEEL or copper cables.

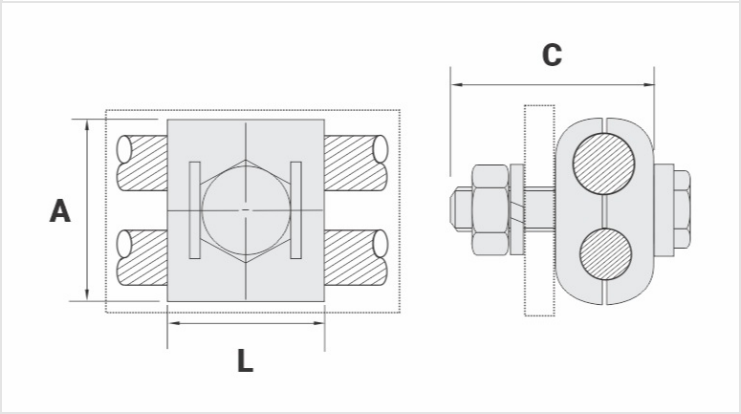
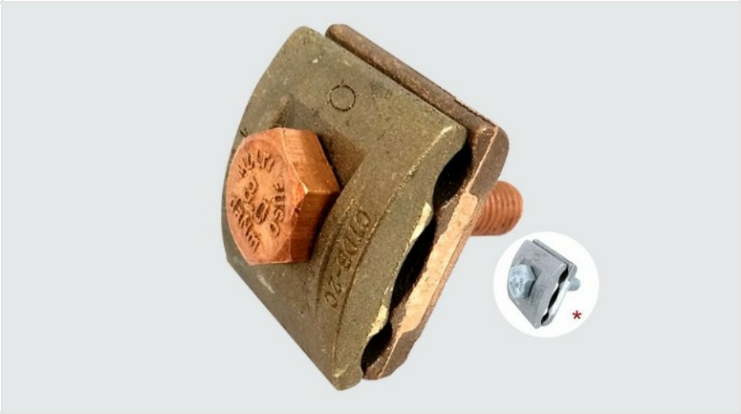
**Characteristics:** Tightening connection. High electrical conductivity and corrosion resistant. Two conductors model. Enough screw length for plate/bar thickness up to 7mm.

**Application:** Grounding systems in general (power distribution systems, grounding grids, residential, building, industrial grounding, grounding in telecommunication networks).

**Material:** Bronze clamp, fittings in copper alloy or hot galvanized steel.

**Application Tool:** Spanner set or open-ended wrench.

\*Also available tin plated.



Datasheet

Conductor		
Cross Section (AWG/MCM)		4 - 2/0
mm²		16 - 70
Dimensions (mm)		
L		35,0
A		40,0
C		45,0
Screw - E		M10
Figure		2
Package		
Qty. / Package		25
Unit Weight (g)		275,00