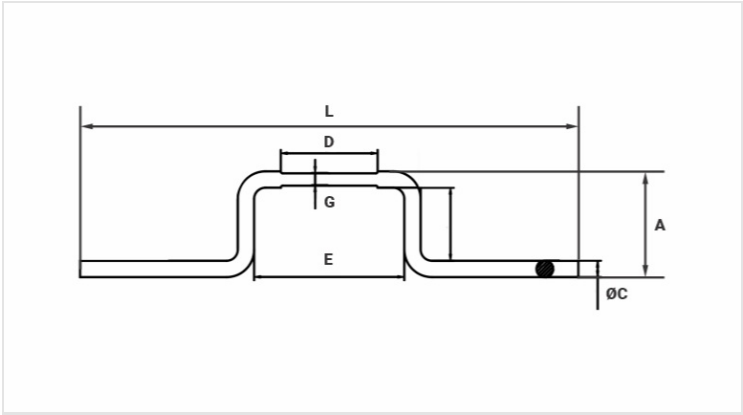
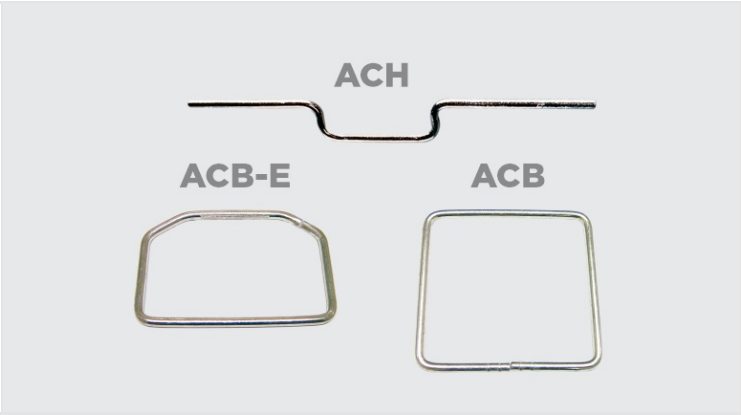


ACB / ACH / ACB-E - STIRRUPS FOR CONNECTORS

ACH-35

Description

- Purpose:** Conection between CA, CAA aluminum or copper cables with wiedege, compression and hotline clamp connector.
- Characteristics:** Connection can be by tightening, compression or spring system. High electrical conductivity and corrosion resistance. Stirrups designed for perfect adaptation with connectors / clamps such as CAH, CAC, CDC, CADC, GLV, among others.
- Application:** Power distribution lines.
- Material:** Electrolytic copper.
- Finish:** Tin plated



Datasheet

Cross Section

AWG/MCM	2
mm²	35

Figure	1
--------	---

Dimensions

L	293,0
A	33,0
Ø C	6,5
D	100,0
E	100,0
F	60,0

Package

Qtd / Emb	100
Peso Unit. (g)	94,40